

03 F-250/F-350 SUPER DUTY



no boundaries



- POWERTRAINS
- FX4 OFF-ROAD
- KING RANCH
- XLT SPORT
- XLT SPORT CREW CAB
- INTERIORS
- FEATURES
- SPECIFICATIONS
- DIMENSIONS/ENGINES
- TOWING/PAYLOAD
- WHEELS/COLOR & TRIM



THE POWERHOUSE OF TORQUE



POWER STROKE V8
TURBO DIESEL



TORQSHIFT

F-SERIES SUPER DUTY POWERTRAINS

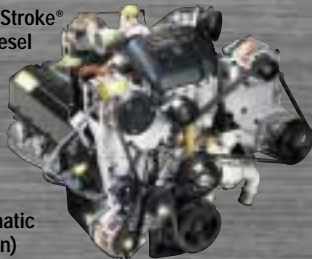
Powertrains are at the heart of doing what trucks are designed to do. However, without the engine and transmission working in tandem, the power to carry, push and pull can be compromised. Ford powertrains are carefully mated and tuned to optimize their performance. Rounding out this awesome display of power are the gas-fueled Tritons: the award-winning 5.4L V8 and the big 6.8L V10.

But the big news for 2003 is right here. Coming in Fall 2002, it's the all-new 32-valve 6.0L Power Stroke V8. It's diesel. It's turbocharged. It's the new diesel benchmark for the highest torque and diesel horsepower in its class. An unbelievable 560 lb.-ft. @ 2000 rpm and 325 hp @ 3300 rpm. Lower right is our new TorqShift™ heavy-duty transmission. It is specifically engineered to handle the new levels of power generated by the new 6.0L Power Stroke V8 Turbo Diesel.

Together, these engines are powerful reasons why Ford F-Series continues to be #1 in pickups.

New 6.0L: 325 max hp/560 lb.-ft. max torque

7.3L Power Stroke®
V8 Turbo Diesel
250 max hp



525 lb.-ft.
max torque
(with automatic
transmission)

5.4L Triton™ V8
260 max hp
350 lb.-ft. max torque



6.8L Triton™ V10
310 max hp
425 lb.-ft. max torque



TRAIL BOSS.



F-SERIES SUPER DUTY
FX4 OFF-ROAD

If the terrain you usually operate on is outside of town, then the new F-250/F-350 FX4 Off-Road Super Duty is what you need to think about. Built on our massive steel frame, the FX4 Off-Road has transfer case and fuel tank skid plates to help protect them from flying rocks. To enhance its attitude, we equipped this beast with branded Rancho® shocks at all four corners. With ages of trucking under our belt, we know that on the weekends many work trucks miraculously turn into recreational vehicles. It's a funny thing about this F-250 Super Duty diesel-equipped FX4 – it can't tell the difference between pulling six tons of wet sand and a trailer filled with toys.

F-250 4x4 SuperCab XLT shown in Silver Metallic with optional FX4 Off-Road Package and other available equipment. *Optional mirrors and engine available Fall 2002.

- 1 The license that says where you can go.
- 2 Branded Rancho shocks for the true off-roader.
- 3 New optional power/heated tow mirrors with integrated turn signals and manual telescoping/2-way-fold feature.*

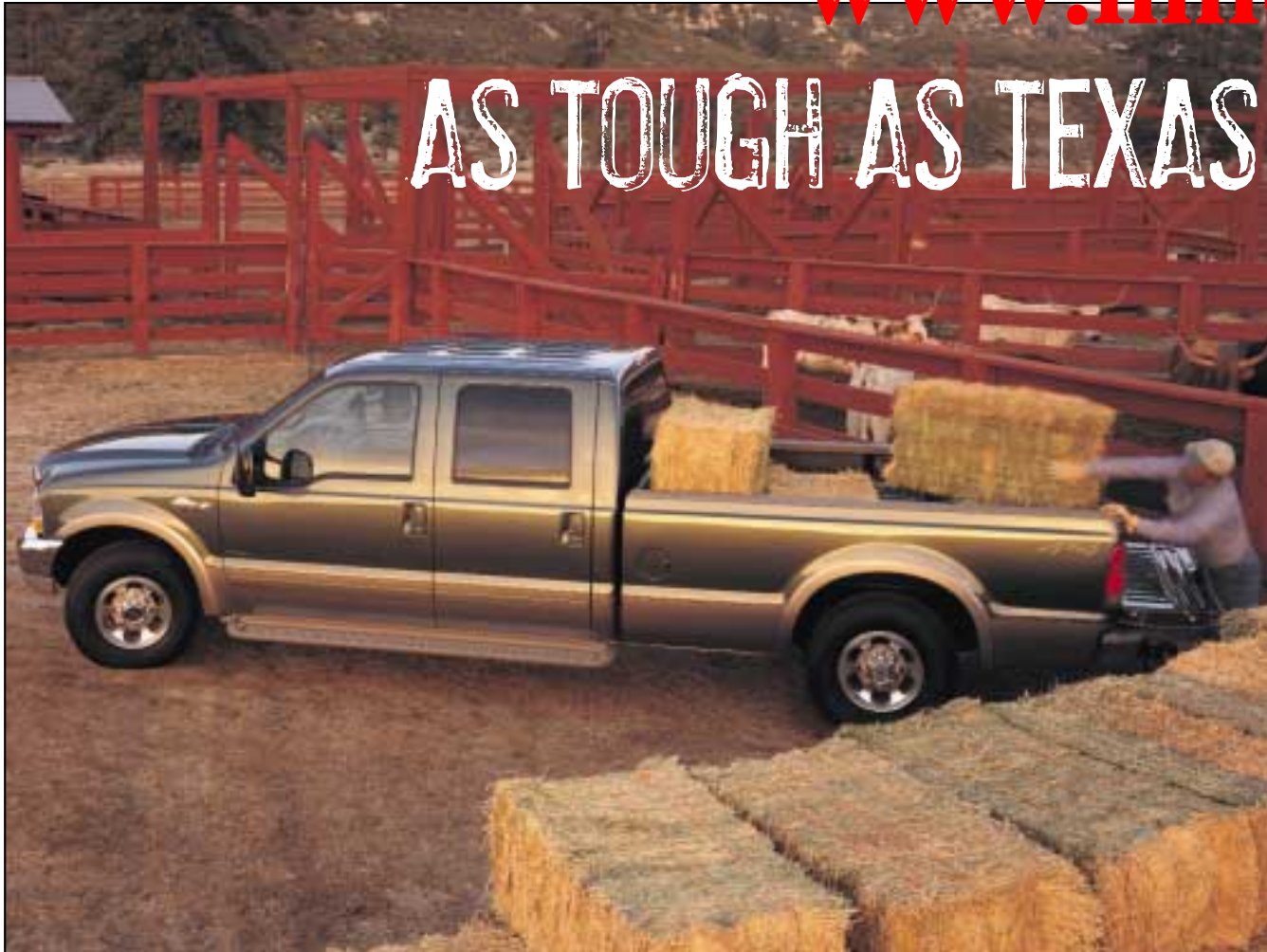
FX4
OFF ROAD

1

2

3

AS TOUGH AS TEXAS IS BIG.



F-SERIES SUPER DUTY
KING RANCH

Which is more important to you? Having the pickup that boasts the Best-In-Class Interior Room? Or having the newest, most luxurious, Built Ford Tough Super Duty pickup? If you'd like to have your cake and well... you know, then the new King Ranch Crew Cab is the only truck you'll need (available Fall 2002). Trimmed in yards of rich, brown Castaño leather and uniquely branded inside and out, the F-250 and F-350 King Ranch pickups are entirely new topics for bragging rights. No matter which state you're in.

F-250 4x4 Crew Cab Long Bed with optional King Ranch package shown in Estate Green/Arizona Beige two-tone. Shown with optional equipment.

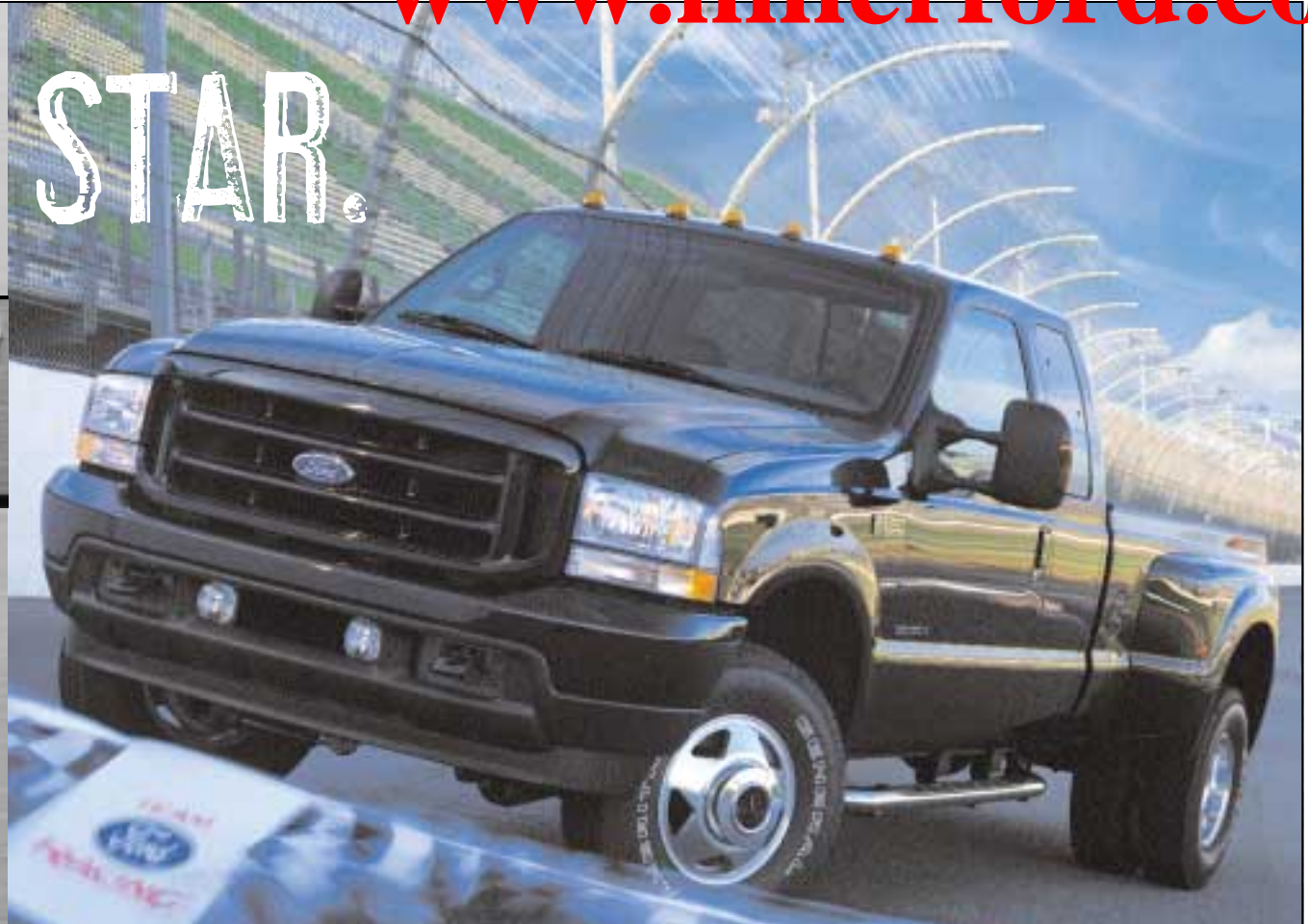
- 1 Quad captain's chairs with front/rear consoles.
- 2 Seating for 5 available with 2nd-row bench seat.
- 3 And yes, two real saddlebags complete the look.



TRACK STAR.

F-SERIES SUPER DUTY XLT SPORT

Special look. Special two-tone interior. Special abilities. Not only is F-Series the Official Truck of NASCAR®, it looks the part too. Now the Super Duty XLT Sport is available in SuperCab, new Crew Cab and five monochromatic paint treatments. They're bad lookin'. Whether they're hauling a ton of rebar or pulling their weight around the track, XLT Sports command attention.



F-350 DRW 4x4 SuperCab XLT Sport shown in Black with optional equipment. *Optional mirrors and 6.0L diesel engine available Fall 2002. F-350 DRW 4x4 Crew Cab XLT Sport in Red. Official truck of NASCAR. NASCAR® is a registered trademark of the National Association for Stock Car Racing, Inc.

- 1 XLT Sport Crew Cab with optional Ebony leather trim.
- 2 F-250 4x4 Crew Cab XLT Sport shown in Dark Shadow Grey with optional 6.8L V10, 4.30:1 axle ratio and trailer tow mirrors (available Fall 2002).



BEST-IN-CLASS ROOM.

F-SERIES SUPER DUTY INTERIORS

MOST ROOM IN THE BUSINESS.

No matter which F-Series Super Duty cab you select, they are all bigger than the competition.

THE BEST-IN-CLASS CREW CAB.

We went out of our way to make the Super Duty interior comfortable, work-worthy and extremely accommodating. To your right are the Lariat Super Duty seats trimmed in Medium Flint leather. Optional goodies are also shown (we just couldn't stop ourselves). Looks like a great place to work, doesn't it?

THE BEST-IN-CLASS SUPERCAB.

The Super Duty SuperCab Medium Parchment cloth interior to the right is designed for durability and high functionality. Easy entry is made possible because of its seat-integrated safety-belt design. Its overall clean, modern appearance gives the four-door SuperCab interior best-in-class room and an open-for-business attitude. No fuss. Straightforward. Easy to operate. That's SuperCab.



SuperCab XLT cloth interior in Medium Parchment with optional equipment.



- 1 The best view in the house. We've done our homework, so you'll feel comfortably in control.
- 2 Optional on XLT and Lariat are power adjustable pedals. With a touch of a button, they'll move up to three inches to help give drivers the comfort they desire.
- 3 To help make you and your front passenger even more comfortable, Lariat Crew Cab comes standard with 6-way power seats and is available with heated seats.
- 4 Optional on XLT and Lariat is the premium electronic AM/FM stereo with a 6-disc in-dash CD player.
- 5 Included with Lariat is the overhead console containing a trip computer, outside temp display, compass and space for your garage door opener, plus a bin for a pair of sunglasses.



Shown above is another beautiful way to outfit the roomiest pickup in the business. Any business. Four full-size doors open to reveal a truly cavernous space. The Lariat LE option makes this interior one of the most luxurious on the road today. With Lariat LE, quad captain's chairs are trimmed in perforated leather and are complemented by woodgrain appearance on the door panels as well as on both console covers. Or, you can choose to have a rear bench for even more seating capacity. Either way, you and your crew will have the most room available to relax, stretch out and enjoy. That's Crew Cab.

INTERIOR FEATURES

- 1 Order the new class-exclusive power moonroof (available Fall 2002) and, along with a breath of fresh air, you'll see the sky, tops of trees and skyscrapers like never before. Optional on XLT and Lariat Crew Cab.
- 2 Standard on Lariat is the sliding rear window. It's a quick way to bring fresh air into the cabin. Optional on XL and XLT.
- 3 Optional on XLT and Lariat is the reverse sensing system, designed to detect objects behind the vehicle and then audibly alert the driver to their presence.
- 4 Optional on XLT and Lariat are bright polished tubular cab steps. They make climbing aboard easy, and they just plain look great.



The F-350 Super Duty DRW Lariat LE has one-of-a-kind looks sure to turn heads. From its distinctive sunvisor with integrated roof marker lights to its Lariat LE-branded interior (shown on previous page), this is one tough-as-can-be luxury workhorse. Also included are lighted "diamond plate" running boards and the Built Ford Tough trailer tow hitch receiver. Available in either a two-tone paint scheme of Ebony/Dark Shadow Grey (shown above) or in solid Ebony.

EXTERIOR FEATURES

SPECIFICATIONS

STANDARD FEATURES

Safety/Security

4-wheel anti-lock braking system (ABS)	Standard
Airbags* – Driver and right-front passenger	Standard
Alert chimes – Headlamps-on, key-in-ignition and door ajar	Standard
Belt-Minder™ safety belt reminder	Standard
Brake/shift interlock (with automatic transmission)	Standard
Child safety seat top tether anchors	Standard
Fuel pump inertia shutoff switch	Standard
Height-adjustable safety belts – Front (Regular Cab, XL SuperCab, Crew Cab)	Standard
Locking tailgate	Standard
Passenger airbag deactivation switch (Regular Cab, SuperCab)	Standard
Safety belt energy management retractors – Front outboard positions	Standard
Safety belt pretensioners – Front outboard positions	Standard
Side intrusion door beams	Standard
Spare tire/wheel lock	Standard

Mechanical

Manual 4-wheel-drive system with manual locking hubs (4x4 models only)	Standard
5.4L SOHC 16-valve Triton™ V8 engine	Standard
6-speed manual overdrive transmission	Standard
100,000-mile tune-up interval** (gas engines)	Standard
Battery saver	Standard
Fail-safe engine cooling system (gas engines)	Standard
Fuel tank – 38-gallon capacity with 8' box, 29-gallon capacity with 6½' box	Standard
Power 4-wheel-disc brakes with ABS	Standard
Power steering	Standard
Quick-release tailgate	Standard
Spare tire/wheel – Full-size with underframe carrier (crank-down type)	Standard
Stabilizer bar – Front	Standard
Stainless steel exhaust system	Standard
Styleside bed – 6½' and 8' SRW/DRW	Standard

Interior

Assist and ride handles	Standard
Coat hooks – 2 in rear of cab	Standard
Cupholders – 2 on instrument panel (2 in rear with SuperCab)	Standard
Dome light (front and rear with Crew Cab)	Standard
Flip-open rear quarter windows (SuperCab)	Standard
Power points – 2 on instrument panel (including lighter)	Standard
Steering wheel – Black vinyl	Standard

Exterior

Bumpers – Front and rear step	Standard
Cargo box light – Integrated with center high-mounted stoplamp	Standard
Cargo box rail and tailgate top moldings	Standard
Cargo tie-down hooks – 4 in cargo box	Standard
Solar tinted glass	Standard
Pickup box stake pockets	Standard
Tow hooks – Front	Standard
Trailer tow – 7/4-pin connector and trailer brake wiring kit (in-cab, no controller)	Standard
Windshield wipers – Interval	Standard

*Always wear your safety belt and always deactivate the passenger airbag when using a rear-facing child safety seat with Regular Cab and SuperCab models. Always wear your safety belt and always secure children in the rear seat with Crew Cab models.

**Under normal driving conditions with regular fluid and filter changes.

MODEL-SPECIFIC FEATURES/OPTIONS

	XL	XLT	Lariat
			Safety/Security
			Advanced Security Group – Includes autolock, autolamp, illuminated entry system and remote keyless entry system with 2 key fobs
			Reverse sensing system
			Mechanical
			5.4L SOHC 16-valve Triton™ V8 engine (not available on DRW Crew Cab)
			6.8L SOHC 20-valve Triton™ V10 engine (standard on DRW Crew Cab)
			7.3L OHV 16-valve Power Stroke® turbo diesel engine
			6.0L OHV 32-valve Power Stroke® turbo diesel engine ¹
			6-speed manual overdrive transmission
			4-speed automatic overdrive transmission
			TorqShift™ 5-speed automatic overdrive transmission ¹
			Manual 4-wheel-drive system with manual locking hubs (4x4 models only)
			Electric shift-on-the-fly 4-wheel-drive system with auto/manual locking hubs (4x4 models only)
			16" argent steel wheels (SRW)
			16" argent steel wheels (DRW)
			16" steel wheels with full sport wheelcovers (SRW) ^{1†}
			16" chrome steel wheels (SRW)
			16" deluxe aluminum wheels (SRW)
			16" premium aluminum wheels (SRW)
			16" polished aluminum wheels – 4 (DRW)
			LT235/85R16E all-season BSW tires (F-250)
			LT235/85R16E all-terrain BSW tires (F-250)
			LT265/75R16E all-season BSW tires (F-250)
			LT265/75R16E all-terrain BSW tires (F-250)
			LT265/75R16E all-season OWL tires (F-250)
			LT265/75R16E all-terrain OWL tires (F-250)
			LT265/75R16 all-season BSW tires (F-350 SRW)
			LT265/75R16 all-terrain BSW tires (F-350 SRW)
			LT265/75R16 all-season OWL tires (F-350 SRW)
			LT265/75R16 all-terrain OWL tires (F-350 SRW)
			LT235/85R16 all-season BSW tires (F-350 DRW)
			LT235/85R16 all-terrain BSW tires (F-350 DRW)
			LT235/85R16 all-season OWL tires – 4 (F-350 DRW)
			LT235/85R16 all-terrain OWL tires – 4 (F-350 DRW)
			Auxiliary idle control kit (diesel engine only) – Includes battery charge protection, high idle control, LCD rpm/voltage readout (shipped as a kit for later installation)
			Dual alternators (diesel engine only)
			Higher ratio rear axle
			Limited slip rear axle
			Power takeoff provision – Automatic transmission
			Skid plates – Transfer case and fuel tank (4x4 models only)
			Trailer hitch receiver – Built Ford Tough with 12,500-lb. capacity ⁶
			Transmission temperature gauge (included with automatic transmission)
			Seating
			Front bench seat – HD vinyl (not available with Crew Cab)
			Front bench seat – HD cloth/vinyl weave (standard with Crew Cab)
			Front bench seat – HD cloth
			Front bench seat – 40/20/40 with armrest, cupholders and storage (XL – HD vinyl; XLT – cloth, Lariat – leather trim)
			Front bucket seats – HD vinyl
			Front bucket seats – HD cloth/vinyl weave
			Front bucket seats – HD cloth

■ Standard ■ Select Availability □ Optional — Not Available

	XL	XLT	Lariat
			Seating (continued)
			Front captain's chairs with console (XLT – cloth, Lariat – leather trim)
			Rear fold-up bench seat (SuperCab)
			Rear bench with folding seat back (Crew Cab)
			Rear flight bench with armrest and cupholders (Crew Cab)
			Heated seats – Driver and front passenger
			Lumbar support – Driver and front passenger
			Power 6-way driver and passenger seats (passenger seat with Crew Cab only)
			Interior
			Accessory delay for power features
			Air conditioning
			AM/FM stereo with digital clock
			AM/FM stereo with cassette and digital clock
			AM/FM stereo with single CD/cassette and digital clock
			AM/FM stereo with 6-disc in-dash CD player and digital clock
			Floor covering – Black vinyl
			Floor covering – Carpet
			Floor mats – Color-coordinated
			Overhead console – Includes trip computer with compass, outside air temperature indicator, distance-to-empty, sunglasses storage and garage door opener storage
			Power adjustable accelerator and brake pedals (with automatic transmission only)
			Power door locks
			Power windows with one-touch-down driver's side feature
			Speed control/tilt steering wheel
			Steering wheel – Color-coordinated leather-wrapped
			Storage tray – Behind seat (Regular Cab, Crew Cab XLT and Lariat)
			Visors with passenger mirror
			Visors with illuminated mirrors and secondary blades
			Exterior
			Bumpers – Argent painted
			Bumpers – Chrome ^{1†}
			Cab steps – Black molded
			Cab steps – Black tubular (Regular Cab Fleet only)
			Cab steps – Bright polished tubular
			Fog lamps (XLT 4x4, Lariat 4x2/4x4)
			Grille – Argent painted
			Grille – Argent insert with chrome surround
			Headlamps – Sealed beam halogen
			Headlamps – Single-beam jewel-effect ^{1†}
			Light – Underhood
			Lower door moldings – Body-color
			Mirrors – Manual
			Mirrors – Power
			Mirrors – Manual glass, manual telescoping trailer tow with 2-way fold
			Mirrors ¹ – Power/heated glass with integrated turn signals, manual telescoping trailer tow with 2-way fold
			Moonroof ¹ – Power-slide (Crew Cab only)
			Privacy glass (rear door windows and rear window)
			Roof clearance lights (standard on DRW only)
			Sliding rear window
			Two-tone paint – Lower accent

¹Available Fall 2002. ^{1†}Available as part of the XL Decor Group. ⁶15,000-lb. capacity on DRW models (available Fall 2002).

SPECIFICATIONS

MODEL-SPECIFIC GROUPS/PACKAGES

XL		
XLT		
Lariat		
<input type="checkbox"/>	<input type="checkbox"/>	<input type="checkbox"/> Camper Package – Includes heavy-service front springs, rear stabilizer bar (SRW vehicles only) and slide-in camper certification
<input type="checkbox"/>	<input type="checkbox"/>	<input type="checkbox"/> FX4 Off-Road Package – Includes skid plates for transfer case and fuel tank, branded Rancho® front and rear shocks, steering damper and FX4 decals (4x4 models only)
<input type="checkbox"/>	<input type="checkbox"/>	<input type="checkbox"/> Heavy-Service Suspension Package – Includes heavy-service front springs and steering damper. Note: 200-lb. upgrade above the spring computer-selected as a consequence of options chosen, not included if maximum springs have been computer-selected as standard equipment
—	—	<input checked="" type="checkbox"/> King Ranch Package (late availability) – Includes unique Arizona Beige two-tone paint and accented grille insert, wheel-lip moldings (SRW only), bumpers, bed rails/tailgate top molding, body-side moldings, lighted diamond plate running boards, tape stripe and polished aluminum wheels; Castano brown leather-trimmed King Ranch-branded quad captain's chairs and center consoles, steering wheel and assist handles (rear bench seat with fold-down center armrest optional); heated driver and front passenger seats; body-color exterior door handles and dual trailer tow mirrors with power/heated glass and integrated turn signals (manual telescoping/2-way fold); King Ranch branding on front fenders, tailgate and wheels (SRW only)
—	—	<input checked="" type="checkbox"/> Lariat LE Package – Includes all Lariat trim features, plus quad captain's chairs with leather seating surfaces, body-color door handles, exterior windshield sunvisor with roof clearance lights, front and rear seat console, lighted diamond plate running boards, power trailer tow mirrors, heated driver and front passenger seats, unique floor mats with "Lariat LE" logo, simulated woodgrain appliques, unique badging on tailgate, LT235/85R16 all-season OWL tires (4), inner tires with DRW and spare are BSW
<input type="checkbox"/>	<input type="checkbox"/>	<input type="checkbox"/> Maximum Front GAWR Package – Includes highest GAWR/springs and steering damper
<input type="checkbox"/>	<input type="checkbox"/>	<input type="checkbox"/> Pickup Box Delete – Deletes pickup box, tailgate, lower door moldings, rear bumper and spare tire carrier (see dealer for model eligibility and recommendations)
<input type="checkbox"/>	<input type="checkbox"/>	<input type="checkbox"/> Snow Plow Package – Includes highest GAWR/front springs and steering damper
<input checked="" type="checkbox"/>	—	<input type="checkbox"/> XL Décor Group – Includes chrome bumpers, single-beam jewel-effect headlamps, and steel wheels with full sport wheelcovers
—	<input checked="" type="checkbox"/>	<input type="checkbox"/> XLT Sport Package – Includes unique body-color door handles, bumpers and grille, privacy glass, sliding rear window, fog lamps, bright polished tubular cab steps, chrome exhaust tip, LT265/75R16 all-season OWL tires, Built Ford Tough hitch receiver, unique 40/20/40 two-tone (black and charcoal) cloth seats, unique carpet, unique front and rear rubber floor mats, unique leather-wrapped steering wheel and unique Ebony interior accents

Select Availability Optional Not Available

Competitive comparisons based on publicly available information and Ford certification data at time of printing. Some features discussed may be optional. Vehicles shown may contain optional equipment. Features shown may be offered only in combination with other options or subject to additional ordering requirements or limitations. Following publication of the catalog, certain changes in standard equipment, options and the like, or product delays, may have occurred which would not be included in these pages. Your Ford Dealer is the best source for up-to-date information. Ford Division reserves the right to change product specifications at any time without incurring obligations.

F-SERIES SUPER DUTY SPECIFICATIONS

Front Suspension

Type	Twin I-Beam (4x2); Solid Monobeam axle (4x4)
Axle (rating @ ground)	4850 lbs. (4x2); 5200 lbs. (4x4)
Springs	Coil (4x2); leaf (4x4)
Shock absorbers	1 ³ / ₈ " gas type
Stabilizer bar	Standard

Rear Suspension

Type	Solid axle
Axle (rating @ ground)	6830 lbs. (F-250/F-350 SRW); 8250 lbs. (F-350 DRW)
Springs	Leaf
Shock absorbers	1 ³ / ₈ " gas type
Stabilizer bar	Standard on DRW pickup; optional in package on SRW pickup

Steering

Type	Haltenberger linkage (4x2); cross-tie linkage (4x4)
Assist	Power
Overall ratio	19.6:1 (4x2); 20.3:1 (4x4)

Brakes

Type	4-wheel disc (standard); 4-wheel ABS (standard)
Front	13.03" rotor diameter
Rear	12.83" rotor diameter

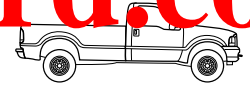
Wheels

Type	Steel (standard); chrome steel or aluminum (optional)
Size	16"
Number of studs	8
Bolt circle diameter	6.7" (170 mm)

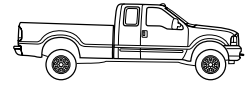
Powertrains	4x4	6-Speed Manual	4-Speed Automatic	5-Speed Automatic
Engine	Transfer Case	Manual	Automatic	Automatic
5.4L Triton™ SEFI V8	2-speed manual	<input checked="" type="checkbox"/>	<input type="checkbox"/>	—
6.8L Triton™ SEFI V10	2-speed manual	<input checked="" type="checkbox"/>	<input type="checkbox"/>	—
7.3L Power Stroke® Diesel V8	2-speed manual	<input type="checkbox"/>	<input type="checkbox"/>	—
6.0L Power Stroke® Diesel V8*	2-speed manual	<input type="checkbox"/>	—	<input type="checkbox"/>

■ Standard Select Availability Optional — Not Available

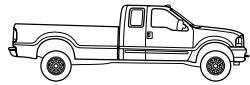
*Available Fall 2002.



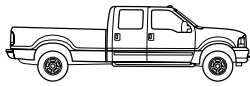
REGULAR CAB
LONG BOX



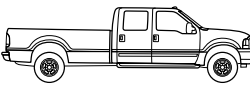
SUPERCAB
SHORT BOX



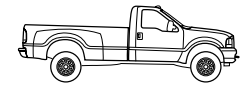
SUPERCAB
LONG BOX



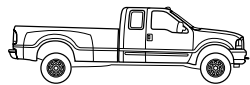
CREW CAB
SHORT BOX



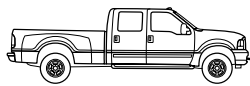
CREW CAB
LONG BOX



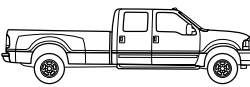
F-350 REGULAR CAB DRW
LONG BOX



F-350 SUPERCAB DRW
LONG BOX

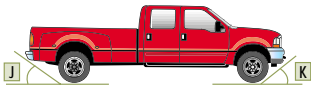
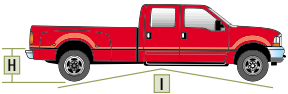
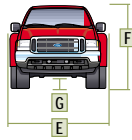
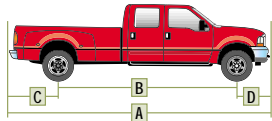


F-350 CREW CAB DRW
SHORT BOX



F-350 CREW CAB DRW
LONG BOX

DIMENSIONS



	Regular Cab 4x2/4x4	SuperCab SWB 4x2/4x4	SuperCab LWB 4x2/4x4	Crew Cab SWB 4x2/4x4	Crew Cab LWB 4x2/4x4
Exterior					
A. Overall length	226.6"	231.4"	247.6"	245.8"	262.0"
B. Wheelbase	137.0"	141.8"	158.0"	156.2"	172.4"
C. Overhang - rear	52.2"	52.2"	52.2"	52.2"	52.2"
D. Overhang - front	37.4"	37.4"	37.4"	37.4"	37.4"
E. Overall width - SRW	79.9"	79.9"	79.9"	79.9"	79.9"
E. Overall width - DRW (at rear wheel housing)	95.5"	—	95.5"	95.5"	95.5"
F. Height - F-250 SRW	76.2"/78.9"	76.6"/79.3"	76.5"/79.0"	77.2"/79.8"	77.0"/76.6"
F. Height - F-350 SRW	76.3"/80.3"	76.8"/80.7"	77.3"/80.3"	77.0"/77.1"	77.3"/80.0"
F. Height - F-350 DRW	78.0"/80.0"	—	77.1"/79.5"	78.9"/77.0"	78.6"/80.0"
G. Ground clearance (rear axle) F-250	8.3"	8.3"	8.3"	8.3"	8.3"
G. Ground clearance (rear axle) F-350 SRW	8.1"	8.1"	8.1"	8.1"	8.1"
G. Ground clearance (rear axle) F-350 DRW	7.8"	—	7.8"	7.8"	7.8"
H. Load height F-250	34.0"/35.2"	33.9"/35.1"	33.6"/34.9"	33.3"/34.6"	33.2"/34.6"
H. Load height F-350 SRW	34.0"/37.8"	33.9"/37.7"	33.5"/37.2"	33.3"/35.9"	33.1"/35.7"
H. Load height F-350 DRW	35.0"/35.9"	—	34.7"/35.8"	34.5"/37.0"	34.3"/35.3"
I. Ramp breakover angle F-250	16.0°/22.2°	15.8°/21.7°	11.9°/19.7°	14.5°/19.7°	13.4°/18.6°
I. Ramp breakover angle F-350 SRW	15.0°/21.4°	15.0°/20.8°	13.8°/19.3°	14.0°/12.1°	13.1°/11.4°
I. Ramp breakover angle F-350 DRW	14.7°/22.2°	—	13.3°/19.6°	13.4°/19.7°	12.6°/18.5°
J. Angle of departure F-250	11.2°/15.9°	11.2°/15.9°	11.2°/15.9°	11.2°/15.9°	11.2°/15.9°
J. Angle of departure F-350 SRW	11.0°/15.7°	11.0°/15.7°	11.0°/15.7°	11.0°/15.7°	11.0°/15.7°
J. Angle of departure F-350 DRW	10.5°/15.9°	—	10.5°/15.9°	10.5°/15.9°	10.5°/15.9°
K. Angle of approach F-250	20.8°/27.7°	20.8°	20.8°	20.8°/27.6°	20.8°/27.6°
K. Angle of approach F-350 SRW	20.8°/27.7°	20.8°/27.7°	20.8°/27.7°	20.8°/27.6°	20.8°/27.6°
K. Angle of approach F-350 DRW	20.8°/27.7°	—	20.8°	20.8°/27.6°	20.8°/27.6°
Interior					
1st Row					
Head room	41.3"	41.4"	41.4"	41.4"	41.4"
Shoulder room	68.0"	68.0"	68.0"	68.0"	68.0"
Hip room	67.4"	67.4"	67.4"	67.4"	67.4"
Leg room	40.7"	40.7"	40.7"	40.7"	40.7"
2nd row					
Head room	—	38.5"	38.5"	41.0"	41.0"
Shoulder room	—	68.0"	68.0"	68.0"	68.0"
Hip room	—	67.3"	67.3"	67.3"	67.3"
Leg room	—	32.4"	32.4"	41.3"	41.3"
Cargo Area					
Volume (cu. ft.)	77.7	64.7	77.7	64.7	77.7
Length at floor	98.6"	82.4"	98.6"	82.4"	98.6"
Width at wheelhouse	50.9"	50.9"	50.9"	50.9"	50.9"
Width at top of box	63.9"	63.9"	63.9"	63.9"	63.9"
Height with molding	20.0"	20.0"	20.0"	20.0"	20.0"

SRW = single rear wheel DRW = dual rear wheel SWB = short wheelbase (6 1/4' cargo box) LWB = long wheelbase (8' cargo box)



5.4L SOHC Triton™ V8



6.8L SOHC Triton™ V10

F-SERIES SUPER DUTY POWERTRAIN SPECIFICATIONS

Type	5.4L Triton™ V8 SOHC	6.8L Triton™ V10 SOHC
Fuel injection	Sequential Electronic	Sequential Electronic
Engine control system	EEC-V	EEC-V
Induction system	Specially tuned	Specially tuned
Battery	12 volt; 650 cca/72 amp	12 volt; 650 cca/72 amp
Alternator	130 amp	130 amp
Cooling system	Pressurized series flow	Pressurized series flow
Cylinders	8	10
Cylinder head material	Aluminum	Aluminum
Block material	Cast iron	Cast iron
Valve operation	Hydraulic roller	Hydraulic roller
Camshaft drive	Silent chain	Silent chain
Bore	3.55"	3.55"
Stroke	4.16"	4.16"
Compression ratio	9.0:1	9.0:1
Horsepower (hp @ rpm)	260 @ 4500	310 @ 4250
Torque (lb.-ft. @ rpm)	350 @ 2500	425 @ 3250
Recommended fuel	Unleaded	Unleaded
7.3L Power Stroke® V8 Turbo Diesel OHV (16 Valve)		
Type	High-pressure, 2-stage injector (HEUI)	Electro-hydraulic w/ Generation 2 fuel injection
Fuel injection	EEC-V	Electronic
Engine control system	Turbocharger, intercooler	Electronic Variable Response Turbocharger (EVRT™), intercooler
Induction system	Dual 12 volt; 750 cca/78 amp	Dual 12 volt; 750 cca/78 amp
Battery	130 amp (Dual 130 amp opt.)	130 amp (Dual 130 amp opt.)
Alternator	Pressurized series flow	Pressurized series flow
Cooling system	8	8
Cylinders	Cast iron	Cast iron
Cylinder head material	Cast iron	Cast iron
Block material	Push rod/rocker arms	Push rod/rocker arms
Valve operation	Gear	Gear
Camshaft drive	4.11"	3.74"
Bore	4.18"	4.13"
Stroke	17.5:1	18.0:1
Compression ratio	275 @ 2800 (man. trans.) 250 @ 2600 (auto. trans.)	325 @ 3300
Horsepower (hp @ rpm)	520 @ 1600 (man. trans.) 525 @ 1600 (auto. trans.)	560 @ 2000
Torque (lb.-ft. @ rpm)	Diesel	Diesel
Recommended fuel	*Available Fall 2002.	

CONVENTIONAL TOWING Maximum Loaded Trailer Weight (lbs.) – Automatic Transmission
F-250/F-350 TOWING/PAYLOAD

Engine	Axle Ratio	GCWR (lbs.)	REGULAR CAB				SUPERCAB				CREW CAB			
			F-250/F-350 SRW 4x2	F-250/F-350 SRW 4x4	F-350 DRW 4x2	F-350 DRW 4x4	F-250/F-350 SRW 4x2	F-250/F-350 SRW 4x4	F-350 DRW 4x2	F-350 DRW 4x4	F-250/F-350 SRW 4x2	F-250/F-350 SRW 4x4	F-350 DRW 4x2	F-350 DRW 4x4
			5.4L SOHC V8	3.73	13,500	7800	7400	7600	7200	7500	7100	7200	6800	7200
	4.10	15,000	9300	8900	9100	8700	9000	8600	8700	8300	8700	8400	—	—
6.8L SOHC V10	3.73	17,000	11,200	10,800	10,900	10,400	10,800	10,400	10,500	10,100	10,600	10,200	10,300	9900
	4.30	20,000	12,500	12,500	12,500	12,500	12,500	12,500	12,500	12,500	12,500	12,500	12,500	12,500
	4.30	20,000 ¹	—	—	13,900	13,400	—	—	13,500	13,100	—	—	13,300	12,900
7.3L Turbo Diesel V8 ²	3.73	20,000	12,500	12,500	12,500	12,500	12,500	12,500	12,500	12,500	12,500	12,500	12,500	12,400
	4.10	20,000	—	—	12,500	12,500	—	—	12,500	12,500	—	—	12,500	12,400
6.0L Turbo Diesel V8 ²	3.73	20,000	12,500	12,500	13,400	13,000	12,500	12,500	13,000	12,600	12,500	12,500	12,800	12,400
	4.10	20,000	—	—	13,400	13,000	—	—	13,000	12,600	—	—	12,800	12,400

Maximum Loaded Trailer Weight (lbs.) – Manual Transmission

5.4L SOHC V8	3.73	13,500	7800	7400	7500	7100	7400	7100	7200	6800	7200	6800	—	—
	4.10	15,000	9300	8900	9000	8600	8900	8600	8700	8300	8700	8300	—	—
6.8L SOHC V10	3.73	16,500	10,600	10,200	10,300	9900	10,300	9900	10,000	9600	10,100	9700	9800	9400
	4.30	20,000	12,500	12,500	12,500	12,500	12,500	12,500	12,500	12,500	12,500	12,500	12,500	12,500
	4.30	20,000 ¹	—	—	13,800	13,400	—	—	13,500	13,100	—	—	13,300	12,900
7.3L Turbo Diesel V8 ²	3.73	20,000	12,500	12,500	12,500	12,500	12,500	12,500	12,500	12,500	12,500	12,500	12,500	12,400
	4.10	20,000	—	—	12,500	12,500	—	—	12,500	12,500	—	—	12,500	12,400
6.0L Turbo Diesel V8 ²	3.73	20,000	12,500	12,500	13,300	12,900	12,500	12,500	13,000	12,600	12,500	12,500	12,800	12,400
	4.10	20,000	—	—	13,300	12,900	—	—	13,000	12,600	—	—	12,800	12,400

FIFTH-WHEEL TOWING Maximum Loaded Trailer Weight (lbs.) – Automatic Transmission³

Engine	Axle Ratio	GCWR (lbs.)	REGULAR CAB				SUPERCAB				CREW CAB			
			F-250/F-350 SRW 4x2	F-250/F-350 SRW 4x4	F-350 DRW 4x2	F-350 DRW 4x4	F-250/F-350 SRW 4x2	F-250/F-350 SRW 4x4	F-350 DRW 4x2	F-350 DRW 4x4	F-250/F-350 SRW 4x2	F-250/F-350 SRW 4x4	F-350 DRW 4x2	F-350 DRW 4x4
			5.4L SOHC V8	3.73	13,500	7800	7400	7600	7200	7500	7100	7200	6800	7200
	4.10	15,000	9300	8900	9100	8700	9000	8600	8700	8300	8700	8400	—	—
6.8L SOHC V10	3.73	17,000	11,200	10,800	10,900	10,400	10,800	10,400	10,500	10,100	10,600	10,200	10,300	9900
	4.30	20,000	14,200	13,800	13,900	13,400	13,800	13,400	13,500	13,100	13,600	13,200	13,300	12,900
7.3L Turbo Diesel V8 ⁴	3.73	20,000	13,700	13,300	13,400	13,000	13,400	13,000 ³	13,100	12,700	13,100	12,800 ³	12,800	12,400
	4.10	20,000	—	—	13,400	13,000	—	—	13,100	12,700	—	—	12,800	12,400
6.0L Turbo Diesel V8 ⁴	3.73	20,000	13,700	13,300	13,400	13,000	13,300	13,000 ³	13,000	12,600	13,100	12,700 ³	12,800	12,400
	4.10	20,000	—	—	13,400	13,000	—	—	13,000	12,600	—	—	12,800	12,400

Maximum Loaded Trailer Weight (lbs.) – Manual Transmission³

5.4L SOHC V8	3.73	13,500	7800	7400	7500	7100	7400	7100	7200	6800	7200	6800	—	—
	4.10	15,000	9300	8900	9000	8600	8900	8600	8700	8300	8700	8300	—	—
6.8L SOHC V10	3.73	16,500	10,600	10,200	10,300	9900	10,300	9900	10,000	9600	10,100	9700	9800	9400
	4.30	20,000	14,100	13,700	13,800	13,400	13,800	13,400	13,500	13,100	13,600	13,200	13,300	12,900
	4.30	20,000 ³	—	—	13,800	13,400	—	—	13,500	13,100	—	—	13,300	12,900
7.3L Turbo Diesel V8 ⁴	3.73	20,000	13,700	13,300	13,400	13,000	13,300	13,000 ³	13,000	12,600	13,100	12,700 ³	12,800	12,400
	4.10	20,000	—	—	13,400	13,000	—	—	13,000	12,600	—	—	12,800	12,400
6.0L Turbo Diesel V8 ⁴	3.73	20,000	13,600	13,300	13,300	12,900	13,300	12,900 ³	13,000	12,600	12,900	12,700 ³	12,800	12,400
	4.10	20,000	—	—	13,300	12,900	—	—	13,000	12,600	—	—	12,800	12,400

MAXIMUM PAYLOAD WEIGHT RATING (LBS.) – Model/Wheelbase

Super Duty Series	GVWR (lbs.)	REGULAR CAB		SUPERCAB		CREW CAB	
		Pickup 137.0"	Pickup 141.8"	Pickup 158.0"	Pickup 156.2"	Pickup 172.4"	
F-250 4x2	8800	3380	3195	3035	2955	2810	
F-250 4x4	8800	2960	2790	2625	2525	2390	
F-350 4x2	9700	4285	4100	3940	3860	3715	
	9900	4485	4300	4140	4060	3915	
	11,000	5135	—	4790	4775	4565	
	11,200	5540	—	5195	4975	4765	
	11,500	5235	—	4875	4860	4650	
	F-350 4x4	9700	3865	3695	3530	3430	3295
9900		4065	3895	3730	3630	3495	
11,000		4665	—	4330	4300	4100	
11,200		5075	—	4740	4500	4300	
11,500		4760	—	4425	4395	4195	

Maximum capabilities shown are for properly equipped vehicles with required equipment and a 150-lb. driver. Weight of additional options, equipment, passengers and cargo must be deducted from this weight. For additional information, see your Ford Dealer.

Conventional Towing Notes: This information also applies to models with Pickup Box Delete option (66D). Trailer tongue load weight should be 10-15% of total loaded trailer weight. Make sure that the vehicle payload (reduced by option weight) will accommodate trailer tongue load weight and the weight of passengers and cargo added to the towing vehicle. The addition of trailer tongue load weight, and the weight of passengers and cargo cannot cause vehicle weights to exceed the rear GAWR (Gross Axle Weight Rating) or GVWR (Gross Vehicle Weight Rating). These ratings can be found on the vehicle Safety Compliance Certification Label. For F-250/F-350 SRW models, F-350 trailer weights are shown; F-250 trailer weights are within 100 pounds. Check with your sales consultant.

Conventional Towing Footnotes: ¹With 15,000-lb. capacity optional hitch receiver (capacity increase on DRW models effective with Fall 2002 production). ²6.0L diesel replaces 7.3L diesel effective with Fall 2002 production. Optional hitch receiver capacity with 6.0L diesel is 12,500 lbs. with SRW models and 15,000 lbs. with DRW models.

Fifth-Wheel Towing Notes: This information also applies to models with Pickup Box Delete option (66D). Trailer king pin weight should be 15-25% of total loaded trailer weight. Make sure that the vehicle payload (reduced by option weight) will accommodate trailer king pin weight and the weight of passengers and cargo added to the towing vehicle. The addition of trailer king pin weight, and the weight of passengers and cargo cannot cause vehicle weights to exceed the rear GAWR (Gross Axle Weight Rating) or GVWR (Gross Vehicle Weight Rating). These ratings can be found on the vehicle Safety Compliance Certification Label.

Fifth-Wheel Towing Footnotes: ³For F-250/F-350 SRW models, F-350 trailer weights are shown; F-250 trailer weights are within 100 lbs. except for the F-250 SRW 4x4 SuperCab and Crew Cab applications indicated above. For these applications, the maximum loaded trailer weight is 12,000 lbs. for F-250 SRW 4x4 SuperCab and 10,400 lbs. for F-250 SRW 4x4 Crew Cab. ⁴6.0L diesel replaces 7.3L diesel effective with Fall 2002 production.

WHEELS



16" Argent Steel Wheel with Black Hub Cover (SRW)



16" Argent Steel Wheel (DRW)



16" Steel Wheel with Full Sport Wheelcover (SRW)



16" Polished Aluminum Wheel with Bright Hub Cover (DRW)



16" Deluxe Aluminum Wheel with Bright Hub Cover (SRW)



16" Chrome Steel Wheel with Bright Hub Cover (SRW)



16" Premium Aluminum Wheel with Bright Hub Cover (SRW)



16" Premium Painted Aluminum Wheel with King Ranch Hub Cover (SRW)

INTERIOR/EXTERIOR COMBINATIONS

Medium Parchment	
Medium Flint	
■	XL/XLT
■	Oxford White
■	Arizona Beige Metallic
■	Red
■	Toreador Red Metallic
■	Dark Highland Green Metallic
■	Sonic Blue Metallic*
■	True Blue Metallic
	Silver Metallic
	Dark Shadow Grey Metallic
■	Black
	XLT Two-Tone
■	Oxford White/Silver Metallic
■	Sonic Blue Metallic*/Silver Metallic
■	True Blue Metallic/Silver Metallic
■	Black/Silver Metallic
	XLT Sport Package
■	Oxford White
■	Red
■	Sonic Blue Metallic*
■	Dark Shadow Grey Metallic
■	Black

Medium Parchment	
Medium Flint	
■	Lariat
■	Oxford White
■	Arizona Beige Metallic
■	Red
■	Toreador Red Metallic
■	Dark Highland Green Metallic
■	Sonic Blue Metallic*
■	True Blue Metallic
■	Dark Shadow Grey Metallic
■	Black
	Lariat Two-Tone
■	Oxford White/Arizona Beige Metallic
■	Oxford White/Silver Metallic
■	Arizona Beige Metallic/Black
■	Toreador Red Metallic/Arizona Beige Metallic
■	Toreador Red Metallic/Silver Metallic
■	Dark Highland Green Metallic/Arizona Beige Metallic
■	Sonic Blue Metallic*/Arizona Beige Metallic
■	Sonic Blue Metallic*/Silver Metallic
■	True Blue Metallic/Arizona Beige Metallic
■	True Blue Metallic/Silver Metallic
■	Dark Shadow Grey Metallic/Black
■	Black/Arizona Beige Metallic
■	Black/Silver Metallic
	Lariat LE
■	Ebony
	Lariat LE Two-Tone
■	Ebony/Dark Shadow Grey Metallic
	King Ranch Package
■	Oxford White/Arizona Beige Metallic**
■	Chestnut Metallic/Arizona Beige Metallic**
■	Estate Green Metallic/Arizona Beige Metallic**

*New for 2003.

**Castano seating surfaces.

PAINT AND TRIM COLORS



Oxford White



Arizona Beige Metallic



Red



Chestnut Metallic*



Toreador Red Metallic



Estate Green Metallic*



Dark Highland Green Metallic



Sonic Blue Metallic



True Blue Metallic



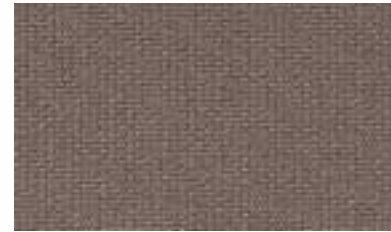
Silver Metallic



Dark Shadow Grey Metallic



Black



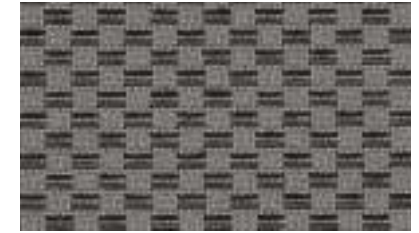
Medium Parchment Cloth



Medium Flint Cloth



Medium Parchment Cloth/Vinyl Weave



Medium Flint Cloth/Vinyl Weave



Medium Parchment Leather



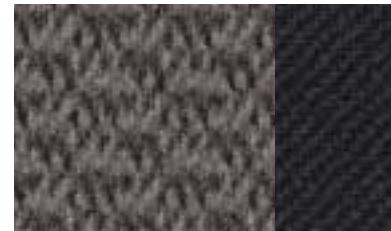
Medium Flint Leather



Black Leather**



Castaño Leather*



Dark Flint Two-Tone Cloth**

*King Ranch only. **XLT Sport only.
Ford uses clearcoat paint for beauty and protection. Colors shown are representative only. See your dealer for actual paint/trim options.